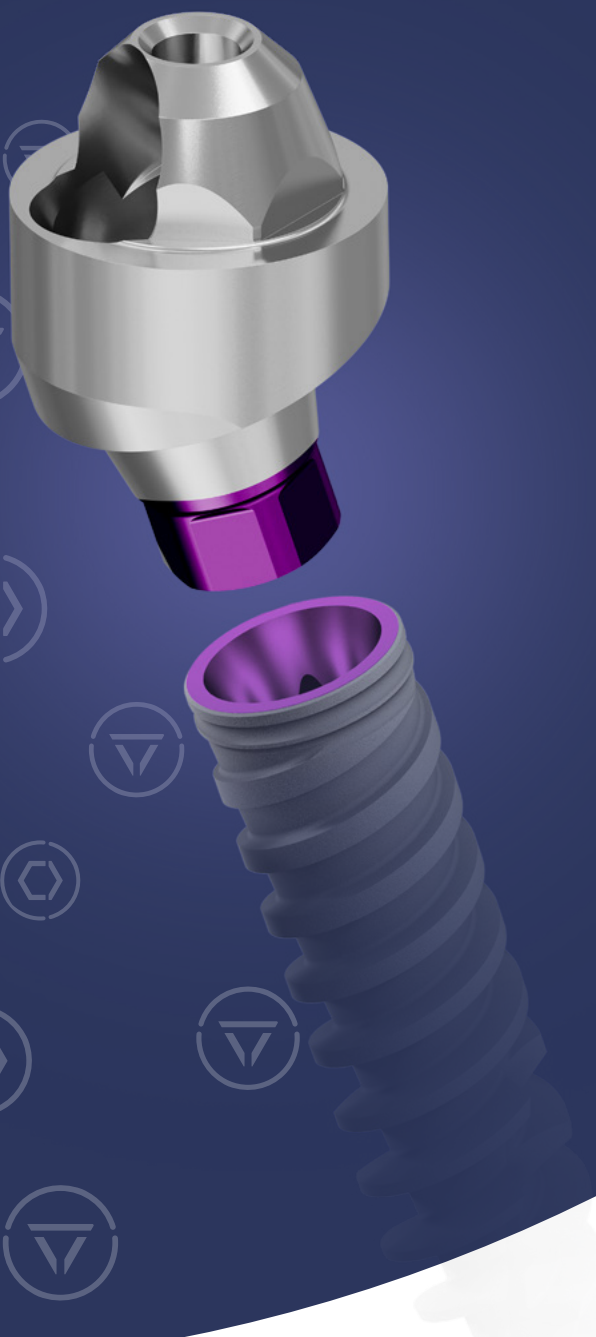
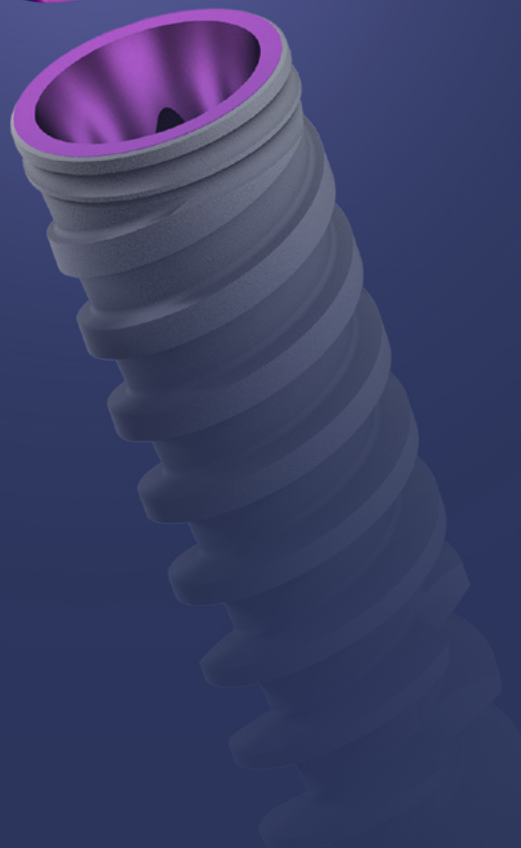
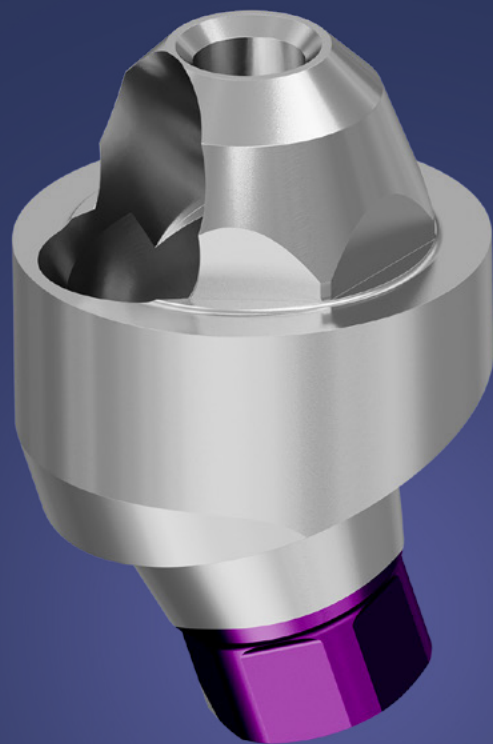


# Single TMA

Precisione & flessibilità per la  
protesi avvitata su singolo elemento



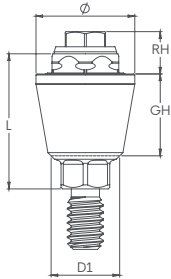



La gamma di prodotti Adin per la protesi avvitata si completa con il sistema STMA (Single Trans Mucosal Abutment) progettato per la riabilitazione del singolo dente. La linea STMA utilizza tutti i vantaggi della linea TMA MultiUnit, contemplando la possibilità di restauri protesici full digital, offrendo una linea di soluzioni esclusive, moderne e complete tale da garantire al professionista la scelta più adeguata per l'ottenimento del miglior risultato estetico.




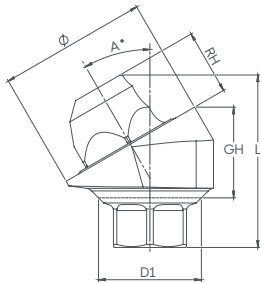
# RS - Single TMA™


Torque raccomandato 35(Ncm)




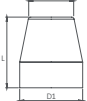
STMA dritti	L	D1	Ø	GH	RH	Codice Art.	
	RS Abutment Dritto Single TMA 1mm	3.7	3.4	4.9	1.0	2.1	RS3731S
	RS Abutment Dritto Single TMA 2mm	4.7	3.4	4.9	2.0	2.1	RS3732S
	RS Abutment Dritto Single TMA 3mm	5.7	3.4	4.9	3.0	2.1	RS3733S
	RS Abutment Dritto Single TMA 4mm	6.7	3.4	4.9	4.0	2.1	RS3729S
	RS Abutment Dritto Single TMA 5mm	7.7	3.4	4.9	5.0	2.1	RS3730S

Viti incluse nella confezione	L	Ø	Codice Art.	
	RS Vite di Ritenzione per TMA 1mm	7.8	3.1	RS3406
	RS Vite di Ritenzione per TMA 2mm	8.8	3.1	RS3407
	RS Vite di Ritenzione per TMA 3mm	9.8	3.1	RS3408
	RS Vite di Ritenzione per TMA 4mm	10.8	3.1	RS3409
	RS Vite di Ritenzione per TMA 5mm	11.8	3.1	RS3412





STMA Angolati		L	D1	∅	GH	RH	Codice Art.
	RS Abutment Angolato Single TMA 17° 2mm	5.2	3.4	4.9	2.0	2.15	RS3734S
	RS Abutment Angolato Single TMA 30° 3mm	5.7	3.4	4.9	3.0	2.15	RS3735S
	RS Abutment Angolato Single TMA 17° 3mm	6.2	3.4	4.9	3.0	2.15	RS3737S
	RS Abutment Angolato Single TMA 30° 4mm	6.5	3.4	4.9	4.0	2.15	RS3738S

Vite RS3403 inclusa nella confezione

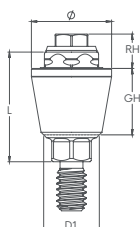
STMA Cappetta di Guarigione		L	D1	D2	Codice Art.
 	Single TMA Cappetta di Guarigione	5.5	4.9	3.5	RS5005S


Vite RS3404 inclusa nella confezione

Viti		L	∅	Codice Art.
	RS Vite di Ritenzione per TMA Angolato	6.1	2.4	RS3403
	TMA Vite Protesica 15 (Ncm)	4.1	2.1	RS3404

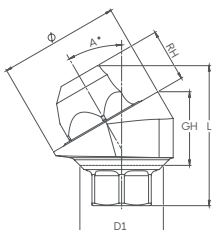
# CloseFit NP - Single TMA™


Torque raccomandato 35(Ncm)




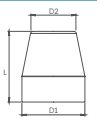
NP STMA Abutment		L	D1	Ø	GH	RH	Codice Art.
	NP Abutment Dritto Single TMA 1mm	4.2	2.5	4.9	1.0	2.1	NP0032S
	NP Abutment Dritto Single TMA 2mm	5.2	2.5	4.9	2.0	2.1	NP0033S
	NP Abutment Dritto Single TMA 3mm	6.2	2.5	4.9	3.0	2.1	NP0034S
	NP Abutment Dritto Single TMA 4mm	7.2	2.5	4.9	4.0	2.1	NP3729S
	NP Abutment Dritto Single TMA 5mm	8.2	2.5	4.9	5.0	2.1	NP3730S

Viti incluse nella confezione		L	Ø	Codice Art.
	NP Vite di Ritenzione per TMA 1mm	8.0	3.1	NP0039
	NP Vite di Ritenzione per TMA 2mm	9.0	3.1	NP0040
	NP Vite di Ritenzione per TMA 3mm	10.0	3.1	NP0041
	NP Vite di Ritenzione per TMA 4mm	11.0	3.1	NP3409
	NP Vite di Ritenzione per TMA 5mm	12.0	3.1	NP3412





NP STMA Abutment		L	D1	Ø	GH	RH	Codice Art.
	NP Abutment Angolato Single TMA 17° 3mm	6.6	2.5	4.9	2.8	2.15	NP0035S
	NP Abutment Angolato Single TMA 30° 3.5mm	6.7	2.5	4.9	3.5	2.15	NP0036S
	NP Abutment Angolato Single TMA 30° 5mm	8.1	2.5	4.9	4.9	2.15	NP0037S
	NP Abutment Angolato Single TMA 17° 4mm	7.7	2.5	4.9	3.9	2.15	NP0038S

Vite NP0042 inclusa nella confezione

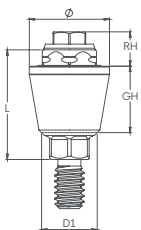
STMA Cappetta di Guarigione		L	D1	D2	Codice Art.
 	Single TMA Cappetta di Guarigione	5.5	4.9	3.5	RS5005S


Vite RS3404 inclusa nella confezione

NP™ Viti		L	Ø	Codice Art.
	Vite per TMA Angolato	7.1	2	NP0042
	TMA Vite Protesica 15(Ncm)	4.1	2.1	RS3404

# CloseFit RP - Single TMA™

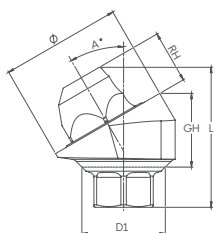
Torque raccomandato 35(Ncm)




RP STMA Dritti		L	D1	Ø	GH	RH	Codice Art.
	RP Abutment Dritto Single TMA 1mm	4.2	2.9	4.9	1.0	2.1	RP0032S
	RP Abutment Dritto Single TMA 2mm	5.2	2.9	4.9	2.0	2.1	RP0033S
	RP Abutment Dritto Single TMA 3mm	6.2	2.9	4.9	3.0	2.1	RP0034S
	RP Abutment Dritto Single TMA 4mm	7.2	2.9	4.9	4.0	2.1	RP3729S
	RP Abutment Dritto Single TMA 5mm	8.2	2.9	4.9	5.0	2.1	RP3730S

RP Viti incluse nella confezione		L	Ø	Codice Art.
	RP Vite di Ritenzione per TMA 1mm	8.00	3.1	RP0039
	RP Vite di Ritenzione per TMA 2mm	9.00	3.1	RP0040
	RP Vite di Ritenzione per TMA 3mm	10.00	3.1	RP0041
	RP Vite di Ritenzione per TMA 4mm	11.00	3.1	RP3409
	RP Vite di Ritenzione per TMA 5mm	12.00	3.1	RP3412







RP STMA Angolati		L	D1	Ø	GH	RH	Codice Art.
	RP Abutment Angolato Single TMA 17° 2.5mm	6.4	2.9	4.9	2.6	2.15	RP3734S
	RP Abutment Angolato Single TMA 30° 3mm	6.9	2.9	4.9	3.7	2.15	RP3735S
	RP Abutment Angolato Single TMA 17° 3.5mm	7.5	2.9	4.9	3.7	2.15	RP3737S
	RP Abutment Angolato Single TMA 30° 4mm	7.3	2.9	4.9	4.0	2.15	RP3738S

Vite RP3403 inclusa nella confezione

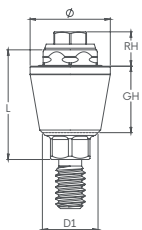
STMA Cappetta di Guarigione		L	D1	D2	Codice Art.
	Single TMA Cappetta di Guarigione	5.5	4.9	3.5	RS5005S

Vite RS3404 inclusa nella confezione






RP™ Viti		L	Ø	Codice Art.
	Vite per TMA Angolato	7.1	2.35	RP3403
	TMA Vite Protesica 15(Ncm)	4.1	2.1	RS3404

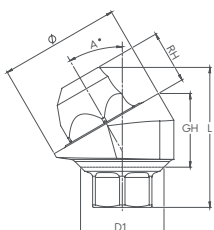
# CloseFit WP - Single TMA™

Torque raccomandato 35(Ncm)



WP STMA Dritti		L	D1	Ø	GH	RH	Codice Art.
	WP Abutment Dritto Single TMA 1mm	4.3	3.35	4.9	1.0	2.1	WP3731S
	WP Abutment Dritto Single TMA 2mm	5.3	3.35	4.9	2.0	2.1	WP3732S
	WP Abutment Dritto Single TMA 3mm	6.3	3.35	4.9	3.0	2.1	WP3733S
	WP Abutment Dritto Single TMA 4mm	7.3	3.35	4.9	4.0	2.1	WP3729S
	WP Abutment Dritto Single TMA 5mm	8.3	3.35	4.9	5.0	2.1	WP3730S

WP Viti incluse nella confezione		L	Ø	Codice Art.
	WP Vite di Ritenzione per TMA	6.5	3.1	WP3406
	WP Vite di Ritenzione per TMA	7.5	3.1	WP3407
	WP Vite di Ritenzione per TMA	8.5	3.1	WP3408
	WP Vite di Ritenzione per TMA	9.5	3.1	WP3409
	WP Vite di Ritenzione per TMA	10.5	3.1	WP3412



WP STMA Angolati		L	D1	Ø	GH	RH	Codice Art.
	WP Abutment Angolato Single TMA 17° 2.5mm	6.4	3.35	4.9	2.5	2.15	WP3734S
	WP Abutment Angolato Single TMA 30° 3mm	6.8	3.35	4.9	3.5	2.15	WP3735S
	WP Abutment Angolato Single TMA 17° 3.5mm	7.4	3.35	4.9	3.5	2.15	WP3737S
	WP Abutment Angolato Single TMA 30° 4mm	7.5	3.35	4.9	4.1	2.15	WP3738S

Vite WP3403 inclusa nella confezione

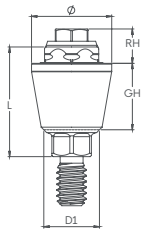
STMA Cappetta di Guarigione		L	D1	D2	Codice Art.
	Single TMA Cappetta di Guarigione	5.5	4.9	3.5	RS5005S

Vite RS3404 inclusa nella confezione

WP™ Viti		L	Ø	Codice Art.
	Vite per TMA Angolato	7.1	2.35	WP3403
	TMA Vite Protesica <sup>15</sup> (Ncm)	4.1	2.1	RS3404

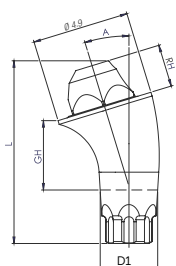
# UniFitSingle TMA™

Torque raccomandato 35(Ncm)




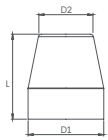
UniFit STMA Dritti		L	D1	Ø	GH	RH	Codice Art.
	UniFit Single TMA Dritto 1mm	4.7	2.9	4.9	1.0	2.1	UF0032S
	UniFit Single TMA Dritto 2mm	5.7	2.9	4.9	2.0	2.1	UF0033S
	UniFit Single TMA Dritto 3mm	6.7	2.9	4.9	3.0	2.1	UF0034S
	UniFit Single TMA Dritto 4mm	7.7	2.9	4.9	4.0	2.1	UF3729S
	UniFit Single TMA Dritto 5mm	8.7	2.9	4.9	5.0	2.1	UF3730S

Viti incluse nella confezione		L	Ø	Codice Art.
	UniFit Vite di Ritenzione per TMA 1mm	8.0	3.1	UF0039
	UniFit Vite di Ritenzione per TMA 2mm	9.0	3.1	UF0040
	UniFit Vite di Ritenzione per TMA 3mm	10.0	3.1	UF0041
	UniFit Vite di Ritenzione per TMA 4mm	11.0	3.1	UF3409
	UniFit Vite di Ritenzione per TMA 5mm	12.0	3.1	UF3412



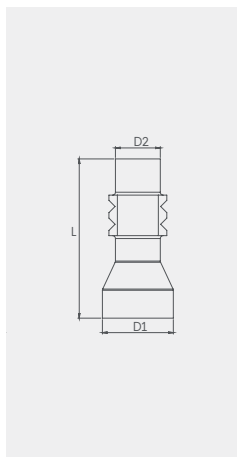
UniFit STMA Angolati		L	D1	Ø	GH	RH	Codice Art.
	UniFit Single TMA Angolato 17° 2.5mm	8.2	2.9	4.9	2.5	2.2	UF3734S
	UniFit Single TMA Angolato 17° 3.5mm	9.3	2.9	4.9	3.5	2.2	UF3737S
	UniFit Single TMA Angolato 30° 3mm	9.2	2.9	4.9	3.0	2.2	UF3735S
	UniFit Single TMA Angolato 30° 4mm	10.3	2.9	4.9	4.0	2.2	UF3738S



Vite UF3403 inclusa

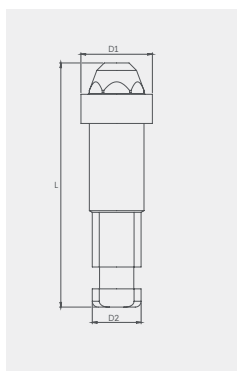
STMA Cappetta di guarigione		L	D1	D2	Codice Art.
 	TMA Cappetta di Guarigione (Vite RS3404 inclusa nella confezione)	5.5	4.9	3.5	RS5005S


UniFit™ Viti		L	Ø	Codice Art.
	Vite per TMA Angolato	7.6	1.95	UF3403
	TMA Vite Protesica 15(Ncm)	4.1	2.1	RS3404

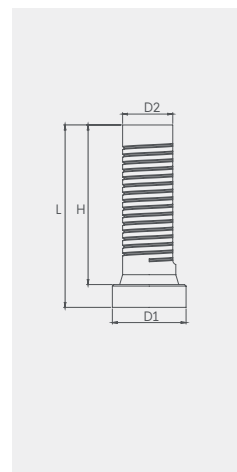
# Protesi per Single TMA™



STMA Transfer		L	D1	D2	Codice Art.
	Single TMA Transfer per impronta a Cucchiaino Aperto (Vite RS5008 inclusa nella confezione)	11.0	4.9	3.1	RS5006S
	Single TMA Transfer per impronta a Cucchiaino Chiuso (Vite RS5009 inclusa nella confezione)	8.0	4.9	4.1	RS5011S

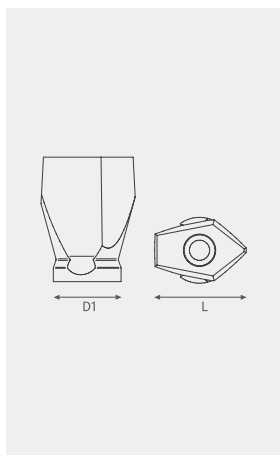




STMA Analogo		L	D1	Codice Art.
	Single TMA Analogo	16.75	4.9	RS5004S

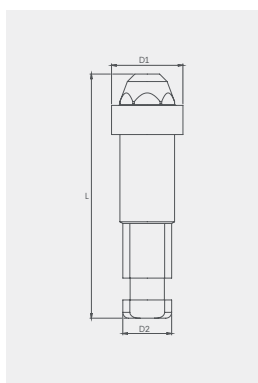



STMA Abutment		L	D1	D2	H	Codice Art.
	Single TMA Abutment Provvisorio in Titanio (Vite RS3404 inclusa nella confezione)	12.0	4.9	3.5	10.5	RS4900S
	Single TMA Abutment Calcinabile con Vite Protetica (Vite RS3404 inclusa nella confezione)	12.0	4.9	3.5	10.35	RS5001S

# Protesi Digitale per Single TMA™

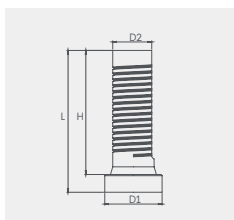



STMA Scan Body		L	D1	Codice Art.	
	Single TMA Scan Body (Vite TM0001 inclusa nella confezione)	6.0	4.9	TM0006S	
		9.0	4.9	TM0009S	

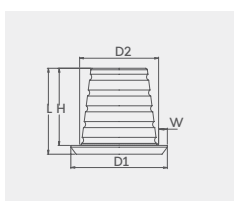



STMA Analogo Modello Digitale		L	D1	D2	Codice Art.
	Single TMA Analogo Modello Digitale	12.0	4.9	3.8	RS1001S

Utilizzare con driver protesico esagonale da 1.27.



STMA Abutment Provvisorio		L	D1	D2	H	Codice Art.
	Single TMA Abutment Provvisorio in Titanio (Vite RS3404 inclusa nella confezione)	12.0	4.9	3.5	10.5	RS4900S



STMA Abutment da incollaggio		L	D1	D2	H	W	Codice
	Single TMA Abutment da incollaggio, low profile (Vite TM0001 inclusa nella confezione)	4.9	5.5	4.5	4.4	0.5	TM0011S

## Lifetime Warranty

A Sense of Security for You & Your Patients



ADIN Dental Implant Systems Ltd fornisce una garanzia a vita che prevede la sostituzione di impianti e/o parti protesiche prodotte da ADIN.

Per maggiori informazioni, termini e modalità consultare il sito Adin al link:

[www.adin-implants.com/lifetime-warranty](http://www.adin-implants.com/lifetime-warranty)



Personal touch  
Professional approach

Industrial Park Allon Tavor  
POB 1128, Afula 1811101, Israel  
T. +972-4-6426732  
[info@adin-implants.com](mailto:info@adin-implants.com)  
[www.adin-implants.com](http://www.adin-implants.com)

**Servizio Clienti Italia**  
HTD Medical s.r.l.  
Via M. Buonarroti 2B, 53013 Gaiole in Chianti (SI)  
Tel: +39 0577 1910565  
[info@htd-medical.it](mailto:info@htd-medical.it) • [www.htd-medical.it](http://www.htd-medical.it)